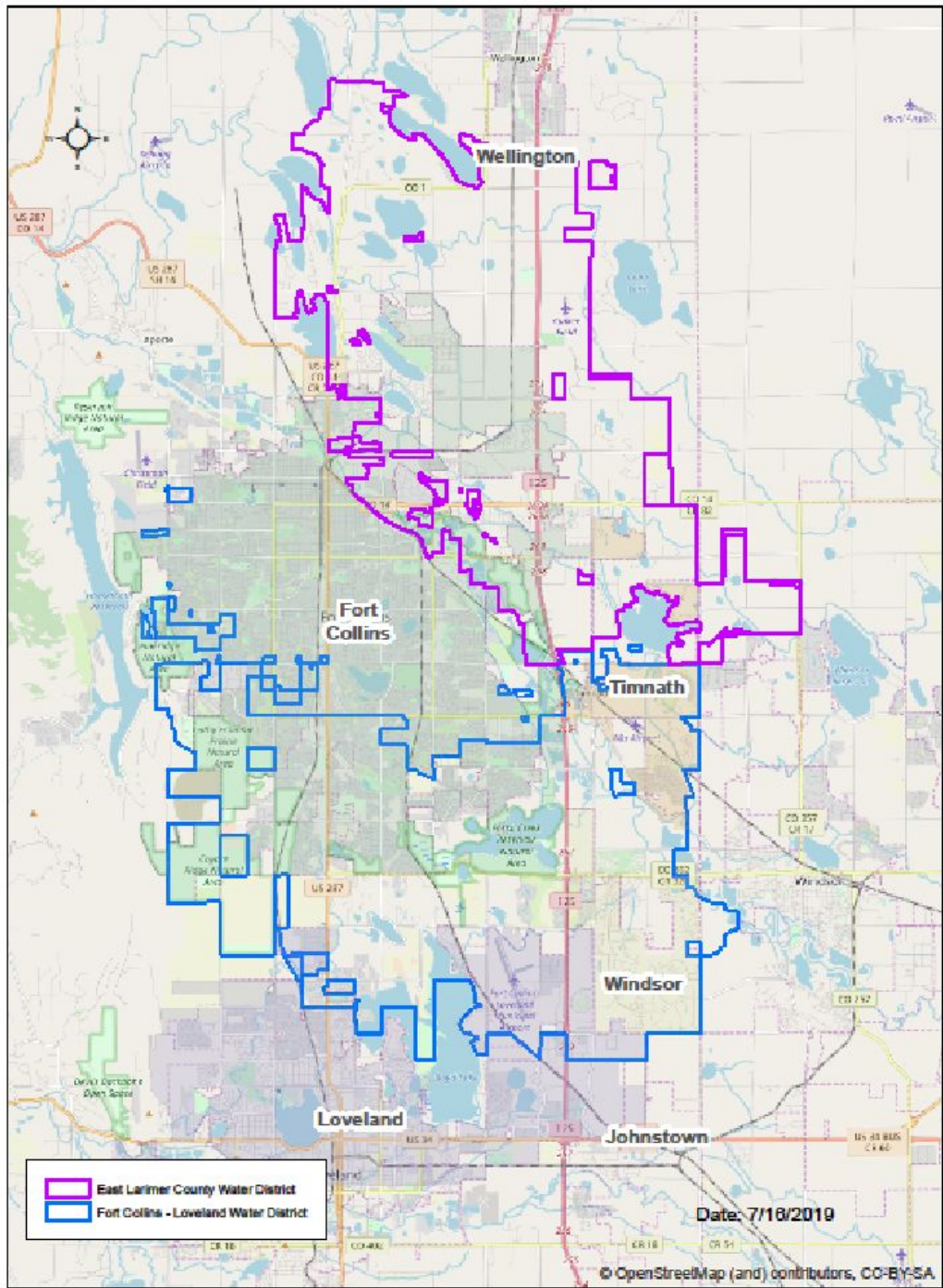


PANELISTS



MIKE SCHEID
GENERAL MANAGER
EAST LARIMER COUNTY
WATER DISTRICT





Background

- **Title 32 Special District Formed in 1962**
- **Service Area – Approximately 50 Square miles**
- **Current Population Served – 21,000**
- **Annual Demand – 4,000 Acre Feet**
- **Historically 100% C-BT Dependent**
- **Late 1990's – Began to Diversify Supply**
 - **Acknowledged that the future of C-BT was limited**



Raw Water Requirements (RWR)

- **Development Required to Acquire and Dedicate Water Rights**
 - **Price and Availability – Lack of Certainty**
- **Annual Allotments Established for all Water Services**
- **2001 ELCO Developed Graduated Residential Tap Fee Schedule**
 - **Based on Single-Family Residential Lot Area**
 - **Smaller lots = Smaller Annual Allotments**



Recent Developments

- **Effect of Non-Potable Irrigation on RWR and Plant Investments Fees**
- **Increased Density of Single-Family Residential Development**
- **Establishment of Smaller Lot Single-Family RWR**
- **Addition of Other Water Rights Acceptable for Potential Dedication**
- **Establish Link Between Land Use and Water Resource Planning**
- **2019 Rate and Cost of Service Study**
 - **Reduced RWR for all customer classes (based on latest 3 years of ELCO customer usage)**



mikes@elcowater.org

(970) 493-2044

